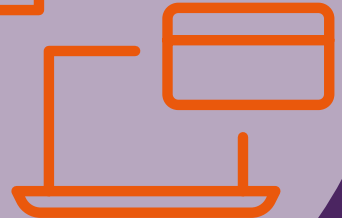
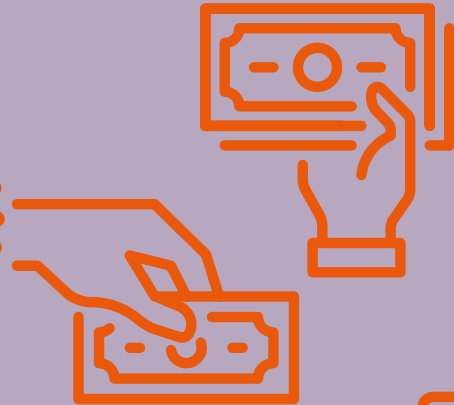




Finance guide

Cymru Wales



For medical students studying in Wales

2024/25

Finance while studying at university is a bewildering and complicated business for students.

Financial entitlements and available funding differ according to where you live, whilst you are studying medicine in the UK.



This guide has been put together to provide you with the information you need to navigate through the world of student finance in Wales, and to point you in the direction of the help and support that is available.

The Welsh Medical Student Committee (WMSC) have put this student finance guide together as a resource for students to easily access information on what financial support is available to medical students. WMSC are aware that many medical students are struggling with the current support available and we continue to lobby Welsh Government to review the current NHS Bursary and other support available to students studying medicine in Wales.

Undergraduate from Wales and studying in Wales

Student loan for tuition fees

Non-means-tested; can cover up to the full annual tuition fee of £9,250 for 2024-25 academic year and from September 2025, up to £9,535

Student finance Wales pay your loan directly to your university or college. You have to pay it back, including interest once you've finished or left your course.

www.studentfinancewales.co.uk

Student loan for maintenance

You could also get a mixture of loan and grant to help with your living costs. How much you get depends on your household income and where you live and study. Tables to show an estimate of how much you could get based on your household income can be found online at www.studentfinancewales.co.uk

To help amid the cost of living crisis, it was announced in September 2023 that NHS Bursary students in Wales will have access to the full maintenance loan available from Student Finance Wales. This includes Medical and Dentistry students in their Bursary years.

The Maintenance Loan and Grant is paid into your bank account in 3 instalments, usually at the start of each term. You have to pay your Maintenance Loan back, including interest once you've finished or left your course. Your grant does not need to be paid back.

Final year students will receive a lower rate of Maintenance Loan and Grant because the final term of their course is shorter due to completing the course.

If you're not in contact with your parents or you've spent time in care, you might not need to provide details of your parents' income when you apply. You can find out more at

www.studentfinancewales.co.uk/undergraduate-finance/full-time/welsh-student/household-income/independent-and-estranged-students/

If you have a disability or long-term health condition, You might be able to apply for [Disabled Students' Allowance](#)

For more information, download the [Disabled Students' Allowance guide](#)



If you have children or adult dependants, you may be able to apply for:

[Childcare Grant](#)
[Parents' Learning Allowance](#)
[Adult Dependants' Grant](#)

Further information can be found at www.studentfinancewales.co.uk

Bursaries available for medical students

If you are studying medicine and domiciled in Wales, you could be entitled to the NHS bursary for Wales from study year 5.

Travel grant information

For a Travel Grant to cover the extra travel costs you might have if you're studying abroad or if you're a healthcare student on a placement in the UK. How much you get depends on your household income and when you started your course. You do not have to pay it back.

For more information on the travel grant visit <https://www.studentfinancewales.co.uk/undergraduate->

[finance/full-time/tuition-fee-and-living-cost-students/what-s-available/extra-help-for-students-studying-abroad/](https://www.studentfinancewales.co.uk/finance/full-time/tuition-fee-and-living-cost-students/what-s-available/extra-help-for-students-studying-abroad/)

NHS Bursary extended in Wales

In September 2023, the Welsh Government announced that the NHS Bursary would be extended in Wales with access to full maintenance loan. You can read more about that here

<https://www.gov.wales/nhs-bursary-extended-wales-access-full-maintenance-loan-amid-cost-living-crisis>

[Medical and Dental Boss Application Scenarios \(PDF,24.7kb\)](#)

Additional funding:

This can include disabled students' allowance, childcare grant (CCG), adult dependants' grant, parents learning allowance, travel grant.

www.studentfinancewales.co.uk

BMA Charities trust fund

<https://bmacharities.org.uk/>

Graduate from Wales and studying in Wales

You are entitled to:

Eligible students can apply for a tuition loan of up to £5,785 in all years of the course. Graduate entry medical and dental students are required to self-fund up to the first £3,465 of the tuition charged in their first year with the Tuition Fee Loan available for the remaining amount. In years 2 to 4 of the course, up to £3,465 is paid as part of the income assessed healthcare bursary from NHS Wales and a TFL of up to £5,785 (where the fee charged is £9,250) is available from Student Finance Wales

In year 1, eligible students can apply for an income assessed maintenance loan and supplementary grants. From year 2 to year 4 of the course, as these students can apply for income assessed healthcare bursaries from NHS Wales, they become eligible for Reduced Rate Maintenance Loan only.

You may be eligible for supplementary grants: These can include disabled students' allowance, childcare grant (CCG), adult dependents' grant, parents learning allowance, travel grant.

www.studentfinancewales.co.uk

Student loan for tuition fees

Non-means tested and may cover the full tuition fees, capped at £9,250 per annum in the academic year 2024-2025 for UK citizens domiciled in England, Scotland and Wales.

Student loan for maintenance

Means-tested; up to £11,930 can be awarded (please check relevant nations' student finance website); allocated based on whether you are still living with parents/guardians; paid out in three instalments.

www.studentfinancewales.co.uk

Maintenance grant and special support grant

Means-tested and non-repayable. Up to £10,124 is awarded (please check relevant nations' student finance website). Only available if your household income is below £41,065. These grants can be applied for alongside any other available finance, including a maintenance loan, as part of the student finance application each year. If a student is eligible for a special support grant, they cannot get a maintenance grant too.

www.studentfinancewales.co.uk

Undergraduate from elsewhere in the UK and studying in Wales?

NHS bursary for fifth year tuition fees

For detailed information on NHS bursaries for each nation, visit:

England

nhsbsa.nhs.uk/students

Scotland

saas.gov.uk

Wales

nwssp.nhs.wales

Northern Ireland

www.studentfinancenir.co.uk/

If you're eligible for an NHS bursary, the NHS pays your standard tuition fees. These are paid directly to your university. However, maintenance loan will be reduced if bursary used towards for tuition fees.

NHS Grant

You may also get a fixed amount of £1,000 if you're an eligible, full-time NHS student.

You'll get a reduced amount if you're a part time student.

You must apply for an NHS bursary to get the NHS grant.



Graduate from elsewhere in the UK and studying in Wales?

Tuition fee loan if studying a 4-year graduate degree. You are eligible for the same distribution of tuition fees as a Welsh domiciled graduate on the same course.

Maintenance loan

Paid directly to you in three instalments across the year. The amount you receive depends on the student finance company of the UK country you are from. For additional funding information, visit:

Wales

www.studentfinancewales.co.uk

Scotland

www.saas.gov.uk

England

www.gov.uk/student-finance

Northern Ireland

www.studentfinancenir.co.uk



3

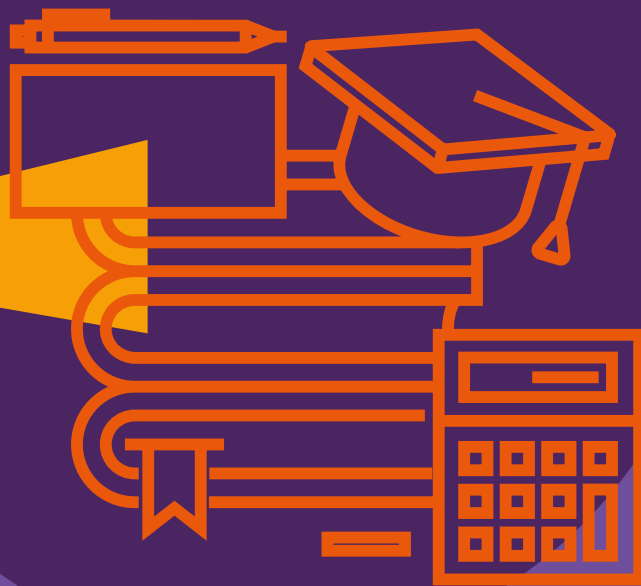
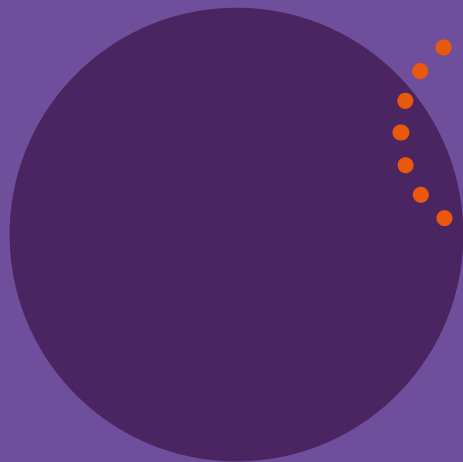
instalments

Maintenance loan

**You
are not
entitled
to:**

**Student loan for tuition fee if you are
studying a 5-year undergraduate
course as a second degree.**

Please check relevant websites for
exact information.



Independent students

If you're an independent student, Student finance Wales do not take your parents' income into account when we're working out how much student finance you can get. If you're married or live with a partner, they may take their income into consideration instead, depending on what age you are and when your course started.

Who qualifies

You will be considered as independent if:

- you're 25 or over
- you've been married or in a civil partnership
- you care for a child under 18
- you've financially supported yourself for at least 3 years prior to the first day of the first academic year of your course
- you have no living parents
- your parents cannot be traced or it's not possible to contact them
- you're permanently estranged from your parents
- you're a 'care leaver' who has been in the care of your local authority between the ages of 14 or 16, depending on when you started your course

WMSC have had some feedback that, when applying to the NHS Bursary, medical students who consider themselves to be independent students, and are so according to Student Finance's guidance, have occasionally been told by NHS bodies that they are not, which can cause some dispute. It is suggested in these cases that students present evidence of Student Finance Wales' assessment of their case as an independent medical student.

For further information please visit:

www.studentfinancewales.co.uk/undergraduate-finance/full-time/welsh-student/household-income/independent-and-estranged-students/



International students studying in Wales

International Students who do not meet the 'Home' criteria will be considered international students and pay international fees. These vary between medical schools but can be found on each individual university website. EU students starting courses in the UK from August 2021 will not be eligible for home student status and will be classified as international/overseas students.

<https://www.medschools.ac.uk/studying-medicine/outreach-and-support/financing-your-studies>

Funding for EU and international undergraduate students in the UK can generally be split into two categories: those offered by UK universities and those offered by third parties – usually governments, or commercial and charitable organisations, in a student's home country.

For further information please go to

<https://www.ucas.com/finance/scholarships-grants-and-bursaries/scholarships-grants-and-bursaries-eu-and-international-students#what-scholarships-grants-and-bursaries-are-available-for-eu-and-international-students>



Other sources of funding

Local initiatives

In some areas local philanthropists offer money to support the education of local people. It's worth asking your local council if such people exist in your area.

Charitable Support

The following is a non-exhaustive list of charities which may be able to provide you with additional sources of funding, depending on your individual circumstances:

Sidney Perry Foundation

Aimed primarily at helping first degree students in hardship.

www.the-sidney-perry-foundation.co.uk

Medical Women's Federation

Financial support for female medical students.

www.medicalwomensfederation.org.uk

Professional Classes Aid Council

Financial assistance for medical students in the final two years of their course.

<https://www.pcac.org.uk/>

Sir Richard Stapley Educational Trust

Provide grants for medical students over the age of 24 on the 1st October of the proposed year of study.

www.stapleytrust.org/

Contact us

BMA Cymru Wales

T: 02920 47 4646

E: bmawales@bma.org.uk

W: bma.org.uk

X [@bmacymruwales](https://twitter.com/bmacymruwales)

f [@BMAWalesStudents](https://www.facebook.com/BMAWalesStudents)

BMA

British Medical Association, BMA House,
Tavistock Square, London WC1H 9JP
bma.org.uk

© British Medical Association, 2024

BMA 2024709

